



## HT-BC Button Load Cell 500N to 20kN

- Capacities 500N to 20kN
- Sealed to IP65
- Low Profile
- Very Compact
- Integral Load Button
- Robust Construction

### 4-20mA sensor output data

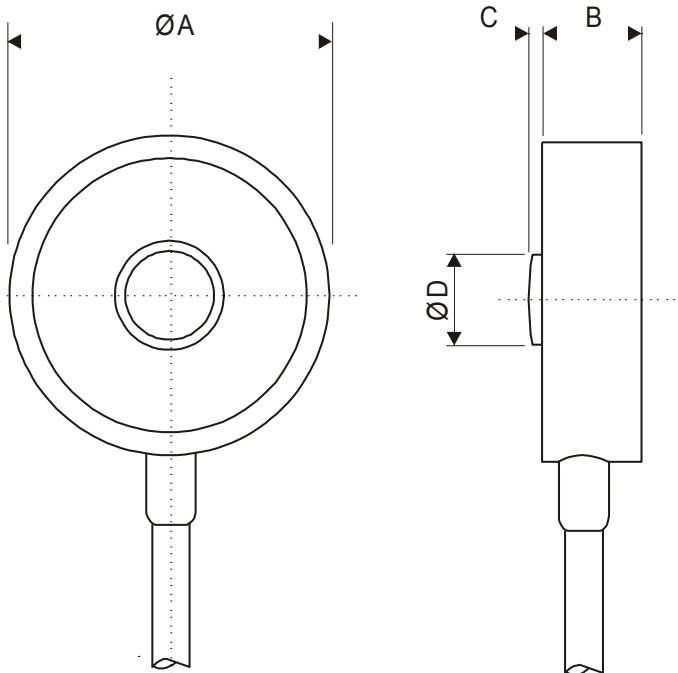
Electrical and Environmental	Min	Typ	Max	Units (Notes)
Power supply	7.5	24	30	V DC (note 1)
Operating Current	4	-	20	mA (note 2)
Operating temperature range	-40	-	85	°C
Storage temperature range	-40	-	125	°C
Reverse polarity protection	-	-	-	-
Measurement	Min	Typ	Max	Units (Notes)
Bridge excitation	1.05	1.11	1.16	V (note 4)
Bridge resistance	350	1000	5000	Ohms (note 5)
Bridge sensitivity	0.5	2.5	55	mV/V (note 6)
Output voltage range	4	-	20	mA
Output load	-	-	800	Ohms (note 7)
Band width	dc	-	1000	Hz
Zero adjustment	-	±2	-	%FR (note 3)
Span adjustment	-	±8	-	%FR
Linearity	-	0.02	-	%FR
Zero temp stability	-	0.001	0.005	±%FR/°C
Span temp stability	-	0.007	0.014	±%FR/°C

4-20mA amplifier supplied in line fitted to standard 5m cable supplied.

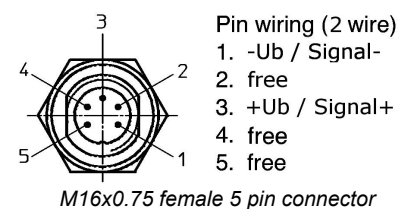
Capacities	0.5, 1, 2, 5, 10, 20	kN
Full Load Output	2.0 (nominal)	mV/V
Zero Load Output	<±2.0	%
Excitation (Max)	10 (15)	V
Accuracy	<0.25	%
Repeatability	<0.01	%
Input Resistance	375 (nominal)	Ω
Output Resistance	350 (nominal)	Ω
Compensated Temp. Range	-10 to +40	°C
Operating Temp. Range	-20 to +60	°C
Temp. Coefficient on Zero	<0.0015	% Capacity/°C
Temp Coefficient on Span	<0.002	% Capacity/°C
Safe Overload	150	%
Insulation	>500 @100Vdc	MΩ
Environmental Protection	IP65	
Cable Length	5	m

Specifications subject to change without notice

### Dimensions (in mm)



Capacity (kN)	A	B	C	D
0.5,1,2	15	7	0.5	4
5,10,20	30	11	0.5	4



Options :

Non-Standard sizes available  
 Other ranges available on request  
 Special mounting adaptors available  
 Shunt calibration facility Different temperature compensation available

### Part Numbering HT-BC-xx-420

Replace xx with kN measuring range required e.g 2kN  
 Part number required = HT-BC-02-420