



WATCHLOG WIRELESS ATEX WIRELESS PRESSURE SENSOR

WLWPX series

Powered by 2x AA batteries up to 5 years battery life


Optional 2x D battery powered or 5...18Vdc externally powered option


Transmit wireless pressure readings up to 1.6km distance and up to 10 times a second

Automatic sleep mode when not in use to save battery life

SECTORS

Petrochemical
Offshore Oil & Gas
Plant Engineering
Industrial machinery
Hydraulics

 The WLWPX range of wireless pressure sensors allow level readings to be transmitted wirelessly up to 1.6km with no need for external power.

 **ATEX Zone I approval**
II 2 G Ex ib IIC T4 Gb
I M2 Ex ib I





WATCHLOG WIRELESS ATEX WLWPX PRESSURE SENSOR

The high-accuracy, low-noise measurement electronics deliver high-resolution, low-drift results. The readings can be transmitted at rates of up to 10 per second all the way up to 1 per minute.

The wireless sensor transmitter module provides exceptional performance in the field with a potential battery life of up to 5 years, by 'powering down' between transmissions or 'powering off' completely.

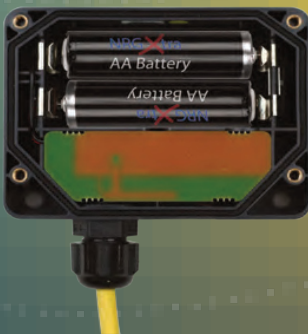
Please contact us to discuss your requirements and receive an estimated battery life calculation. The wireless sensor transmitter modules come configured as standard with a 10ms sample every 1 second.

This can be adjusted by customers by using the free toolkit software supplied or alternatively provided as required.

**SENSORS CAN
BE CONFIGURED
WITH
THE INCLUDED
SOFTWARE
TOOLKIT**

WLWPX ASSEMBLY OVERVIEW

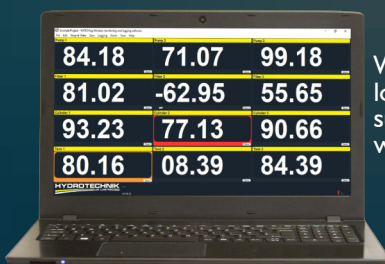
Powered by 2
'AA' cell batteries



Power LED



Environmentally
sealed to IP67



Watchlog display &
logging software is
supplied free of charge
with all sensors.



WATCHLOG WIRELESS ATEX WLWPX PRESSURE SENSOR

TECHNICAL SPECIFICATIONS

Specification	Detail
Wireless range (maximum)	800 meters
Wireless range (maximum with HT-AR extender)	1600 meters
Transmission rate	100ms...60s
Power supply	3 Vdc (2xAA battery, 2xD battery or 5...18Vdc external powered options)
Battery life	Up to 5 years
Wireless transmitter enclosure operating temperature	-20...55°C
Pressure sensor media temperature	-40...125°C
Pressure sensor ambient temperature	-40...105°C
Pressure sensor accuracy (at RT)	0.5% FS
Pressure sensor wetted parts	SS316L
IP rating	IP67

* Depending on version

PRESSURE SENSOR

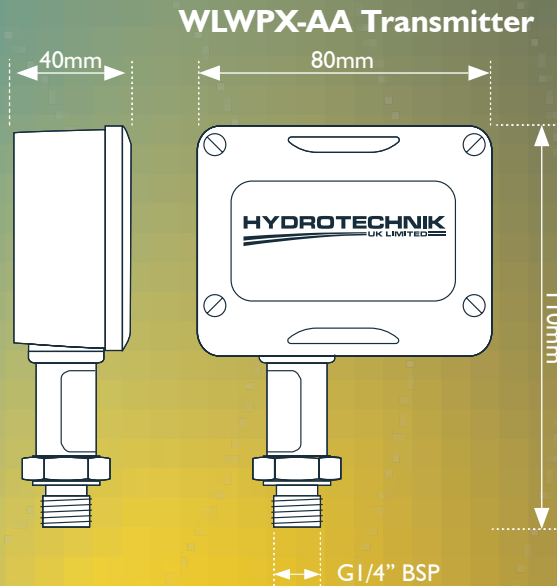
Pressure range	Over pressure (max)	Burst pressure (min)
0...25 bar	50 bar	75 bar
0...60 bar	200 bar	300 bar
0...160 bar	230 bar	480 bar
0...250 bar	500 bar	750 bar
0...400 bar	800 bar	1200 bar
0...700 bar	1200 bar	1800 bar

Other pressure ranges available on request





WATCHLOG WIRELESS ATEX WLWPX PRESSURE SENSOR



ORDER CODE

WLWPX - AA - XXXX - Y Z.Z

Replace **XXXX** with below code
for the required pressure range

0025 = 0...25 bar
0060 = 0...60 bar
0160 = 0...160 bar
0250 = 0...250 bar
0400 = 0...400 bar
0700 = 0...700 bar

630 bar version available on request

Replace **Y** with below
code for angled or
straight cable

A = Angled
S = Straight

Leave blank if no cable required

Replace **Z.Z** with below
code for cable length

1.5 = 1.5 meters
3.0 = 3.0 meters
5.0 = 5.0 meters
10.0 = 10.0 meters

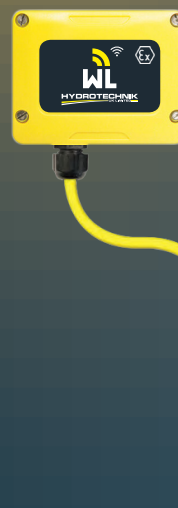
Other lengths available on request

ORDERING EXAMPLES



WLWPX-AA-0250

0...250 bar pressure
sensor
directly mounted to
Watchlog transmitter.



WLWPX-AA-0160- S3.0

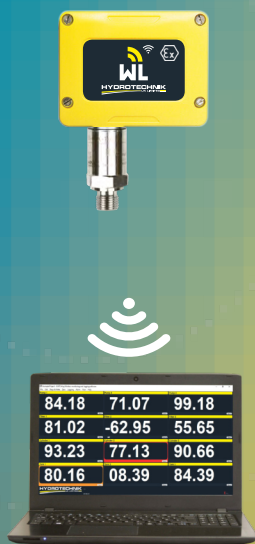
0...160 bar pressure sensor
Cable mounted to Watchlog
Transmitter using a 3.0m cable
and a straight connector.



WATCHLOG WIRELESS ATEX WLWPX PRESSURE SENSOR

CONFIGURATION OPTIONS

One-to-One



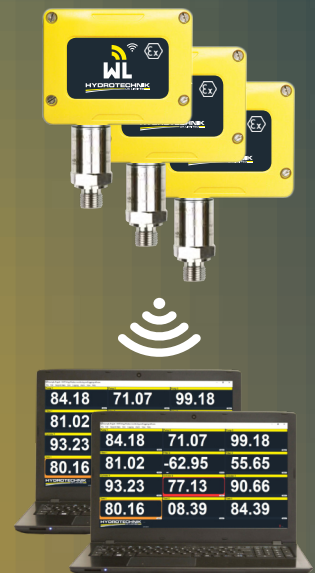
One-to-Many



Many-to-One



Many-to-Many



OTHER WATCHLOG PRODUCTS AVAILABLE



WLWT wireless
pressure sensors



WLWF wireless flow meters



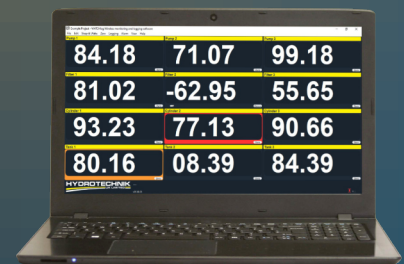
WLW-AR signal repeaters
WLW-PP1 SPI solar power
panel and battery pack.



WLW-BSx series USB signal
receiving base stations.



WLW series signal gateways



Watchlog display
and datalogging software



WATCHLOG REPRESENTS A HUGE STEP IN THE PROVISION OF A SECURE POINT TO POINT USB AND WIRELESS TRANSMISSION OF SENSOR SIGNALS.



Watchlog USB is a new generation of sensors and datalogging solutions from Hydrotechnik UK using our Watchlog USB dual pressure & temperature sensors with transmission rates of up to 1000 times per second.



Watchlog Bluetooth® is a new generation of short range wireless measurement of pressures, designed to work with iOs and Android mobile devices as well as Windows tablets and PC's.



The Watchlog Wireless sensor system is our short to medium (800m to 1.6km) range wireless monitoring option for up to 60 sensors at one time. Watchlog wireless is designed for pressure, temperature, level or flow sensors in applications where cabled sensors or power are not possible.



Watchlog Pro & Watchlog Vision has been developed to support wireless transmission of a huge range of sensors and signals over longer distances (up to 5km). Up to 60 sensors can transmit to one receiver which includes oil life, pressure/differential pressure, level and temperature, flow, force, CANbus and much more, all powered by two widely available batteries.

CONTACT

Call us on **0800 068 4134** for more information and to obtain our other brochures:

Hydrotechnik UK Ltd
1 Central Park
Lenton Lane
Nottingham
NG7 2NR
UK

UK Freephone: **0800 068 4134**
Telephone: **+44 (0) 115 900 3550**
Fax: **+44 (0) 115 986 8875**
Website: **www.hydrotechnik.co.uk**
Email: **sales@hydrotechnik.co.uk**

18 July 2023