

Flush Diaphragm Pressure Transducers & Transmitters

HT-SMF Series



- High accuracy & reliability
- Ranges 0.6 bar to 200 barg
- 4-20mA, voltage & CAN outputs
- Temperature -30°C to 100°C
- Wide choice of connectors
- Perfect for difficult to measure media

Open face pressure sensors for food, process or industrial applications with liquid/slurry pressure media that contains particulates or solids. Conventional sensors have a small diameter inlet port with internal diaphragm cavity, the HT-SMF offers a flush diaphragm to prevent media blocking/clogging.

Food & Beverage
Sanitary & Medical
Chemical/Process
Paper/Pulp
Industrial Machinery

Flush Mount/Open Face Pressure Transducers & Transmitters

HT-SMF Series

TECHNICAL SPECIFICATIONS

Standard pressure ranges & signal outputs

Measuring range (barg)	0.6	1	1.6	2	2.5	4	6
Overload pressure	3	3	4	4	7	7	15
Measuring range (barg)	10	20					
Overload pressure	15	30					
Measuring range (bara)	1	2	2.5	6	10	20	40
Overload pressure	3	4	7	15	15	30	100
Measuring range (bara)	60	100	160	200			
Overload pressure	200	200	300	300			

* Gauge ranges shown - vacuum and absolute ranges available on request

Electrical	2 wire / 3 wire	3 wire	3 wire	ratiometric
Output signal	4-20mA	0-10Vdc	1-5Vdc	0.5-4.5Vdc
Supply voltage	9-32 Vdc	12-32 Vdc	8-32 Vdc	5Vdc ± 10%

- Media temperature range: -30°C to +100°C
- Compensated temperature range: -20°C to +85°C
- Ambient temperature range: -30°C to +100°C

Performance

- Accuracy: Non-linearity, hysteresis and non-repeatability at room temperature according to IEC 61298-2 (or BSFL/Best Fit Straight Line): <0.5% FS range (<0.25% BFSL) *Optional <0.25% FS (<0.15% BFSL)*
- Temperature effects: Zero/Span typical thermal coefficients <0.15% FS range/ 10°C
- Total Error Band: Maximum 2% FS from room temperature to -30°C or +100°C
- Long term stability: <0.1% FS range/year
- Response time: < 1 ms (from 10% to 90% FS range)
- Vibration resistance: 20g (according to IEC 68-2-6 and IEC 68-2-36)
- Shock resistance: 1000g (according to IEC to 68-2-32)

Physical

- Material: body - stainless steel, pressure inlet port - stainless steel
- Process connection: G 1/2" or G 1"(DIN3852: Form E) *Other connections available on request*
- Electrical connection: integral cable (1 metre), M12 x 1 male socket, DIN plug/socket, mini DIN plug socket (DIN EN 175301-803) *Other connections available on request*
- Weight: approximately 80-120g (dependent upon configuration)
- Ingress protection: IP65 (for connector versions with their mating plug fitted)

Options

- (1) Improved accuracy <0.25% FS (<0.15 % BFSL)
- (2) additional cable (per metre - specify length)
- (3) IP69K ingress protection rated version

For further options or customised products please contact us.

Related products

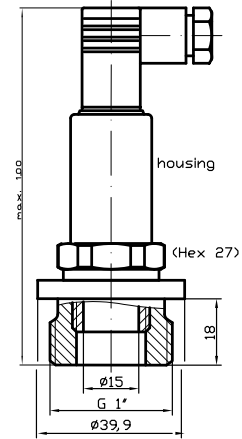
Hydrotechnik manufactures a wide range of sensors, test and measurement equipment.

Contact us for further information or visit www.hydrotechnik.co.uk

Continuing development can necessitate specification changes without notice

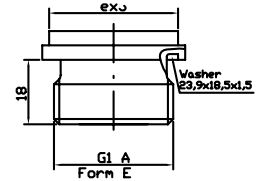
Dimensions

HT-SMF with MVS DIN EN 175301-803



Mechanical Connections

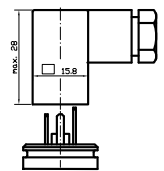
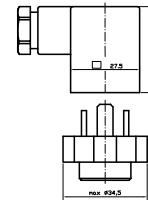
G 1/2"; DIN 3852; Form E



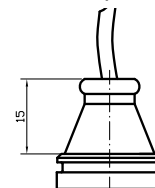
Electrical Connections

MVS/A
DIN EN 175301-803

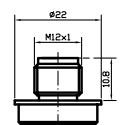
MVS/C
DIN EN 175301-803



Cable Output



Male socket
M12x1 (S 763)



HT-SMF Series ORDER CODES

Series	Output Signal	Pressure Range	Unit	Pressure Type	Process Connection	HEX	Electrical Connection	Extras
HT-SMF	60.0	0000400	BAR	(a)	G2AF	22	M12	-

4...20 mA / 2 wires	10.0
0...20 mA / 3 wires	10.1
4...20 mA / 3 wires	10.2
0...10 V	20.0
1...5 V	20.1
0...6 V	20.20
0...5 V	20.4
0.5...4.5 V ration	37.0
0.5...4.5 V not ration	40.0
CANopen 2.0A	60.0
Others	AA

bar	BAR
kPa	KPA
MPa	MPA
PSI	PSI
kg/cm2	KGC
m WC	MWS
in WC	IWS
others	CCC

Absolute Pressure	(a)
Relative Pressure	(g)

G 1/2 A Shape A	G2AF	27
G 1/2 A Shape E	G2EF	27
Others	DDDD	EE

MVC/A	MVA
MVC/C	MVC
Hirschmann Mini	HIM
LEMO EWB IS	LMS
IS9 Industrial Socket	IS9
Packard	PAI
Male Socket M 5 / S707	M05
Male Socket M 12 / S763	M12
Male Socket M 16 / S723	M16
Male Socket M 18 / S714	M18
Junior Timer	JTI
Bajonet DIN 72585	BJD
Bajonet VG 95234	BJV
Super Seal	SUS
Deutsch 3-poles	D03
Deutsch 4-poles	D04
QUICK ON	QON
Flying Leads 1.0*	FLI
Cable Gland Plastic	CPI
Cable Steel 1.0*	KS1
Cable Plastic 1.0 *	KPI
Others	FFF

-1 0	9000100		
-1+1	9000900		
0 0.400	0000040		
0 ... 0.600	0000060		
0 ... 1.0	0000100	0..... 10	0001000
0 ... 1.6	0000160	0 ... 16	0001600
0 ... 2.5	0000250	0 ... 25	0002500
0 ... 4	0000400	0 ... 40	0004000
0 ... 6	0000600	0 ... 60	0006000
		0 ... 100	0010000
		0 ... 160	0016000
		0 ... 200	0020000
		others	BBB

Total Error 0.25%	F25
Total Error other	FXX
Cleaned for Oxygen Use	O2C
Others (see below)	GGG

* e.g. with cable length 1 metre