

Minimess[®]*Xtreme*[®] 1000 bar High-Pressure Test Points

The new Minimess[®]*Xtreme*[®] high-pressure test point combines the characteristics of the classic Minimess[®] test points with a significantly higher working pressure capability.

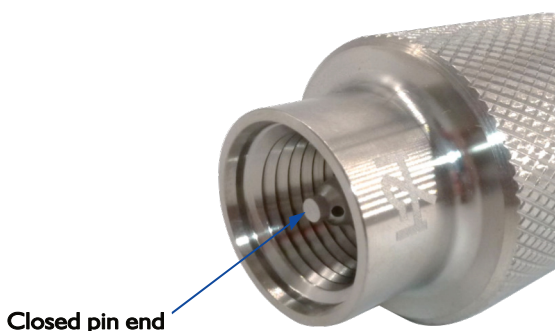
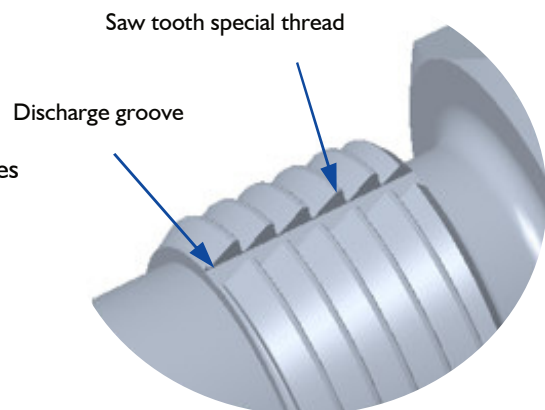
Features and Benefits

- Nominal working pressure of 1000 bar
- Designed for a burst pressure of 4000 bar
(This is achieved via the unique and innovative internal valve design)
- Long service life: > 1,000,000 pressure pulses at 1330 bar
- Dual use: suitable for hydraulic fluids as well as inert gases
- Made of corrosion resistant stainless steel 1.4571 (316Ti)

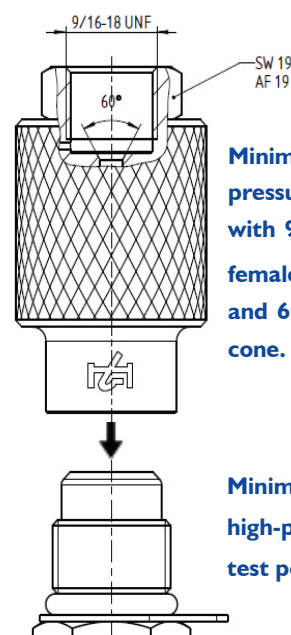


Connectable by hand up to 700 bar

- Large diameter on the opening armature allows higher hand tightening torques.
- A special thread with saw tooth profile on the coupling side reduces the required torque for connecting under pressure compared to a standard V profile thread.
- The connecting fitting remains engaged when the valve is closed and the opening pin is out of the secondary seal. Enclosed gas pressure in the mating hose is drained via the discharge groove before the fitting is completely decoupled.



Closed pin end



Minimess[®]*Xtreme*[®] high-pressure mating adapter with 9/16"-18 UNF female (1/4") thread and 60° female sealing cone.

Minimess[®]*Xtreme*[®] high-pressure test point

Damage-free high pressure connection

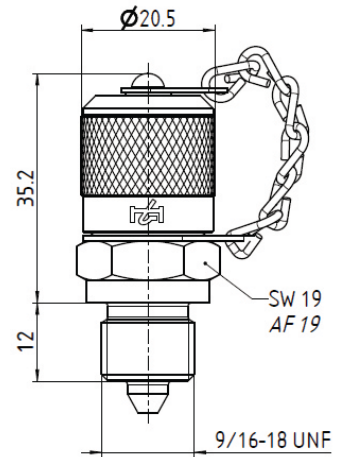
- The closed pin end on the mating adapter prevents the pin from being crushed when coupling under high pressure or when there are significant pressure peaks when connected.

MinimessXtreme® test points

High pressure test point with 9/16"-18 UNF Form D screw in thread

This test point is suitable for use with liquid and gaseous media. The metallic sealing with a 58° sealing cone is standard in high pressure fittings & systems.

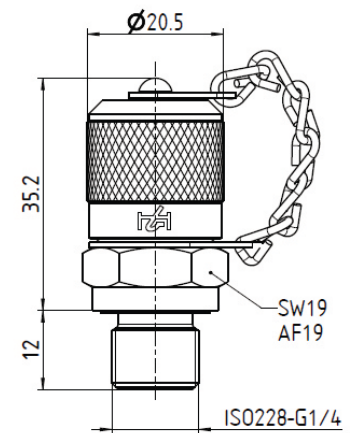
Part Number: **MTP7-CMKI-DIFI**



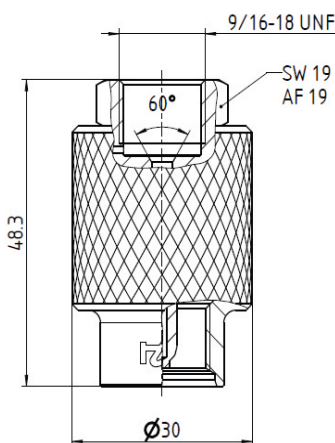
High pressure test point with ISO228-G1/4" Form F screw in thread.

This test point is primarily suitable for use with gaseous media. When using liquid media, strong pressure pulsations can lead to damage of the profile sealing ring at the screw-in stud. Due to the profile sealing ring the burst pressure is also limited to 2500 bar.

Part Number: **MTP7-CMKI-F2FI**

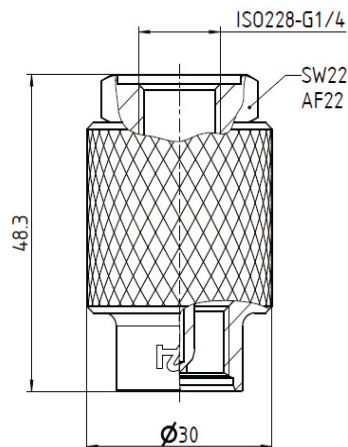


MinimessXtreme® high pressure mating adapters



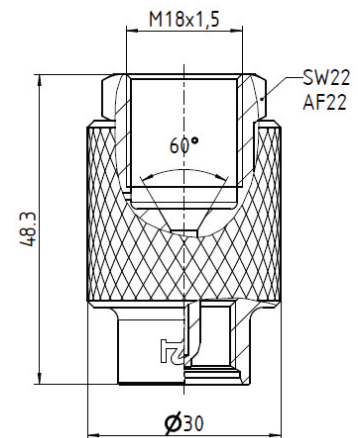
This adapter is suitable for connecting pipes, hose lines or other components with 1/4" - 58° sealing cone and 9/16"-18 UNF threaded stud.

Part Number: **MAA7-CVUI-DIMI**



This adapter is suitable to connect pressure sensors, hose assemblies or other components with ISO228- G1/4 Type F stud end.

Part Number: **MAA7-CVUI-FIMI**



This adapter is suitable for connecting pressure sensors or other components with M18x1.5 screw-in stud and 58° sealing cone.

Part Number: **MAA7-CVUI-D3MI**