

## Industrial Pressure Transducers & Transmitters

### HT-SML Series

- High accuracy & reliability
- Ranges Vacuum to 1,000 bar
- 2 or 3 wire mA & voltage outputs
- Wide choice of connectors
- Temperature -40°C + 125°C
- Compact and rugged design



The HT-SML series combines advanced silicon sensing technology with compact and rugged stainless steel packaging to deliver high performance and reliable pressure measurements, even in harsh operating conditions. The modular configuration enables a wide choice of pressure and electrical connections.

**Plant Engineering**  
**Industrial machinery**  
**Automotive**  
**Hydraulics and Pneumatics**  
**Refrigeration & HVAC**

# Industrial Pressure Transducers & Transmitters HT-SML Series

## TECHNICAL SPECIFICATIONS

### Standard pressure ranges & signal outputs

Measuring range* (bar)	1	1.6	2	2.5	4	6	10
Overload pressure	6	6	6	10	10	20	20
Burst pressure	9	9	9	15	15	30	30
Measuring range (bar)	16	20	25	40	60	100	160
Overload pressure	40	40	100	100	200	200	400
Burst pressure	60	60	150	150	300	300	600
Measuring range (bar)	200	250	400	600	1000		
Overload pressure	400	750	750	840	1200		
Burst pressure	600	1000	1000	1050	1500		

\* Gauge ranges shown - vacuum and absolute ranges available on request

Electrical Configuration	2 wire / 3 wire	3 wire	3 wire	ratiometric
Output signal	4-20mA	0-10Vdc	0-5Vdc/1-5 Vdc	0.5-4.5Vdc
Supply voltage	9-32Vdc	12-32Vdc	8-32Vdc	5Vdc ± 10%

- Media temperature -40°C to +125°C
- Compensated range -20°C to +85°C
- Ambient temperature -40°C +105°C

### Performance

- Accuracy: Non-linearity, hysteresis and non-repeatability at room temperature according to IEC 61298-2 (or BSFL/Best Fit Straight Line) <0.5% FS range (<0.25% BFSL) Optional <0.25% FS range (<0.15% BFSL)
- Temperature effects: Zero/Span typical thermal coefficients <0.15% FS range/ 10°C
- Total Error Band: Max 2% FS from room temperature to -40°C or +105°C
- Long term stability: <0.1% FS range/year
- Response time: < 1ms (from 10% to 90% FS range)
- Vibration resistance: 20g (according to IEC 68-2-6 and IEC 68-2-36)
- Shock resistance: 1000g (according to IEC to 68-2-32)

### Physical

- Material: body - stainless steel, pressure inlet port - stainless steel
- Process connection: G 1/4 A, G 1/4B, G 1/2B, 1/4NPT  
*Other connections available on request*
- Electrical connection: integral cable (1 metre), M12 x 1 male socket, DIN plug/socket, mini DIN plug socket (DIN EN 175301-803)  
*Other connections available on request*
- Weight: approximately 80-120g (dependent upon configuration)
- Ingress protection: IP65 (for connector versions with their mating plug fitted)

### Options

- (1) Improved accuracy <0.25% FS (<0.15% BFSL)
  - (2) additional cable (specify length)
- For further options or customised products please contact us.*

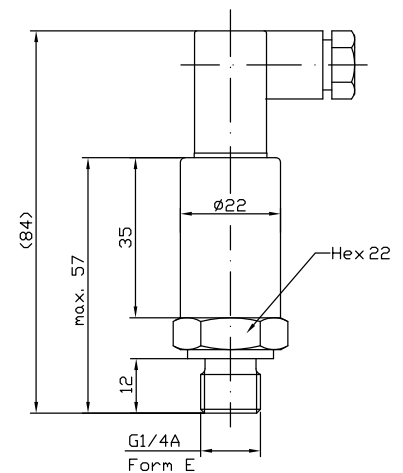
### Related products

Hydrotechnik manufactures a wide range of sensors, test and measurement equipment. Contact us for further information or visit [www.hydrotechnik.co.uk](http://www.hydrotechnik.co.uk)

*Continuing development can necessitate specification changes without notice*

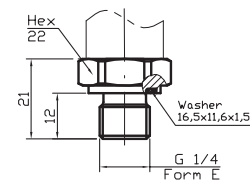
## Dimensions

### SML with MVS/C DIN EN Plug 175301-803

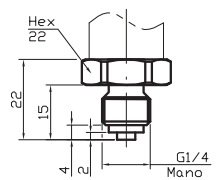


## Mechanical Connections

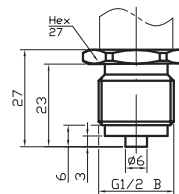
### G 1/4 A; DIN 3852; Form E



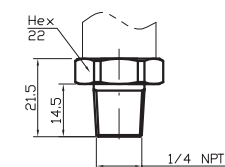
### G 1/4 B



### G 1/2 B

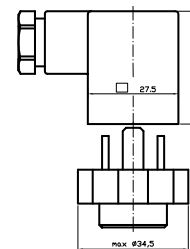


### 1/4 NPT

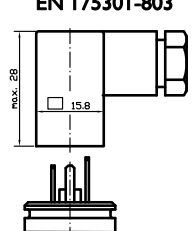


## Electrical Connections

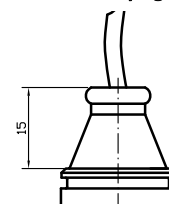
### MVS/A DIN plug EN 175301-803



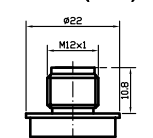
### MVS/C DIN plug EN 175301-803



### Moulded flying lead



### Male socket M12x1 (S763)



# HT-SML Series ORDER CODES

Series	Output Signal	Pressure Range	Unit	Pressure Type	Process Connection	Hex	Electrical Connection	Extras
HT-SML	10.0	0010000	BAR	(g)	G14E	22	MVC	R06

4...20 mA / 2 wires	10.0
0...20 mA / 3 wires	10.1
4...20 mA / 3 wires	10.2
0...10 V	20.0
1...5 V	20.1
0...6 V	20.20
0...5 V	20.4
0.5...4.5 V ratiometric	37.0
0.5...4.5 V non ratiometric	40.0
Others	AA

bar	BAR
kPa	KPA
MPa	MPA
PSI	PSI
kg/cm <sup>2</sup>	KGC
m WC	MWS
in WC	IWS
others	CCC

Absolute Pressure	(a)
Relative Pressure	(g)
Sealed Pressure	(sr)

MVC/A	MVA
MVC/C	MVC
Hirschmann Mini	HIM
LEMO EWB 1S	LMS
IS9 Industrial Socket	IS9
Packard	PAI
Male Socket M 5 / S707	M05
Male Socket M 12 / S763	M12
Male Socket M 16 / S723	M16
Male Socket M 18 / S714	M18
Junior Timer	JTI
Bajonet DIN 72585	BJD
Bajonet VG 95234	BJV
Super Seal	SUS
Deutsch 3-poles	D03
Deutsch 4-poles	D04
QUICK ON	QON
Flying Leads 1.0*	FLI
Cable Gland Plastic	CP1
Cable Steel 1.0*	KSI
Cable Plastic 1.0 *	KPI
Others	FFF

-1 .... 0	9000100		
-1 .... +1	9000900		
0 ... 1.0	0000100	0 ... 25	0002500
0 ... 1.6	0000200	0 ... 40	0004000
0 ... 2.5	0000250	0 ... 60	0006000
0 ... 4	0000400	0 ... 100	0010000
0 ... 6	0000600	0 ... 200	0020000
0 ... 10	0001000	0 ... 250	0025000
0 ... 16	0001600	0 ... 400	0040000
0 ... 20	0002000	0 ... 600	0060000
		0 ... 1000	0100000
		others	BBB

G 1/8 A Shape A	G18A	22
G 1/4 A Shape A	G14A	22
G 1/4 A Shape E	G14E	22
G 1/4 B (Manom.)	G14B	22
G 1/2 B (Manom.)	G12B	27
G 1/2 A Shape E	G12E	27
1/8 NPT	I8NP	22
1/4 NPT	I4NP	22
7/16-20 UNF-2A	U98M	22
7/16-20 UNF-2A/C	U72C	22
7/16-20 UNF-2B	U72F	22
3/8-24 UNF-2A	U38M	22
3/8-24 UNF-2A/C	U38C	22
1/2-20 UNF-2A	U12M	22
M 10x1 Shape A	M10A	22
M 12x1 Shape E	M12E	22
M 12x1 konical	M12C	22
M 12x1,5 Ct-Ring	M12S	22
M 14x1,5 Shape A	M14A	22
M 14x1,5 Shape E	M14E	22
M 14x1,5 ISO	M14O	22
M 16x1,5 Shape A	M16A	22
M 16x1,5 female	M16F	22
M 18x1,5 male	M18M	22
M 20x1,5 Manom	M20B	22
R 1/4 male	R14M	22
Others	DDDD	EE

Restrictor 0.6 mm	RO6
Restrictors others	RXX
Total Error 0.25%	F25
Total Error other	FXX
Cleaned for Oxygen Use	O2C
Metal Cone	SCO
Schrader Opener 2.9	S29
Others (see below)	GGG

\* e.g. with cable length 1 metre